

Setting Up Corel Draw Files For Printing

NOTE: Before creating your artwork, we recommend you read our information sheet on "sizing your document"

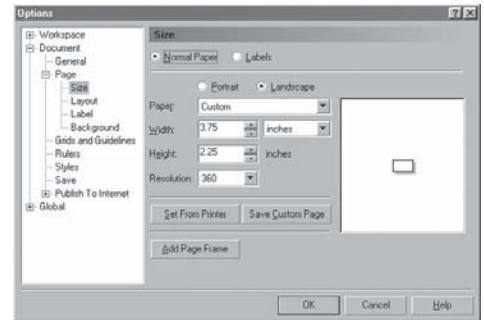
Step 1: Create a new file

Command: File > New

Step 2: Set your document size

Command: Layout > Page Setup

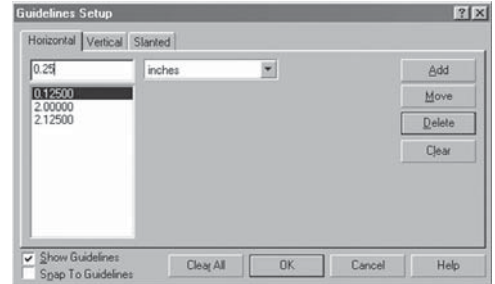
Set your page size as shown in "Sizing Your Document"; and set your resolution to 360 (minimum). Remember that your document must be 0.25" larger than the final product to account for bleed. In the example at right (and for other examples in this section), a 3.5" x 2" business card is being created, and so the document size is 3.75" x 2.25".



Step 3: Set up Guides

Command: Layout > Guidelines Setup

Guides will remind you where your trim lines and safe zone are as you create your artwork. Measuring inwards from each border of the document, set your trim lines at 0.125" and your safe zone boundary at 0.25".



Step 3: Create your artwork

Some tips for creating artwork that will yield the highest quality printed results: Use a rich black: Large solid black areas will look more vibrant using a black composed of 100% Process Black, 40% Cyan, 10% Magenta and 10% Yellow than if you simply use process Black. Note that rich black should not be used for text or gradients.

Use Large Bitmaps: Imported bitmaps must be sized equal to or greater than their final pixel dimension in your final artwork. For example, if you are creating a full-bleed scanned background on a 2"x3.5" business card, you must ensure that the imported image measures at least 810 x 1350 pixels; that's the bleed size (2.25" x 3.75"), multiplied by the resolution (360 dpi).

Avoid Thin Borders: Borders with inside edges close to the edge of your "safety zone" may not appear even once the finished product has been cut. We recommend avoiding borders entirely; however, if you must have a solid border, make sure its edge is well inside the safety zone.

Importing Images: Imported images must be in either TIFF or EPS format. Colour images must use the CMYK colour mode, while black-and-white images should be greyscale. As a final check before exporting your file, go to File > Document Info and make sure all bitmap objects are in CMYK.

Object Colours: Make sure your colour palette and all objects are in CMYK mode. To set up your colour palette, go to Tools > Palette Editor and make sure the Mode is set to CMYK. To check that individual objects are CMYK, right-click the object, select "Properties", go to the "Fill" and "Outline" tabs, click "Edit", and make sure the Model is set to CMYK.

Setting Up Corel Draw Files For Printing Cont.

Step 5: Export your file

Command: File > Export

Enter your file name, select "EPS" format, and click "Export". We recommend you use a descriptive file name; YOURCOMPANY_PROJECT_FRONT.eps is a good example. A new dialog box will appear. This box's exact appearance will depend on what version of the software you are using; there may be just one window or there may be both a "General" and "Advanced" tab. In either case, set the export parameters as follows:

- Check "Include Header"

- Format: TIFF

- Type: 8 bit Colour

- Resolution: 300 DPI

- Export text as Curves

- Fountain steps: 256

- Leave all other boxes unchecked

Step 6: Submit your files to Ultra X-Press

Please compress your files using Win Zip or Stuff It

Files can be uploaded through our website at printprint.ca

If you have any questions feel free to contact us.

Ultra X-Press Printing
#403 - 119 West Pender St.
Vancouver, Canada
V6B 1S5

office: 604 872 8943
email: techsupport@printprint.ca
printprint.ca